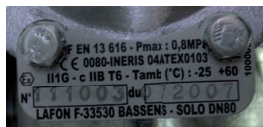




# SOLO 3" FOR CHEMICAL USE OVERFILL PREVENTION DEVICE



Overfill prevention device



The SOLO overfill prevention device is an item of safety and environmental protection equipment. The SOLO overfill prevention device has an integral passage and a short re-opening time to ensure rapid filling. It is the fruit of LAFON's more than 30 years of experience in Overfill Prevention Device.

## ADVANTAGES

- Flow rates 20 - 25% greater than competitor for equivalent product (integral passage for faster filling)
- Suitable for gravity or pressure (8 bar) filling
- Very easy to fit : flange to be screwed on
- Anti-vortex, preventing premature closing
- Durability of material (float in non corrodible stainless steel)
- Operational test on every unit made on our test rig



## PRODUCT

- Product invented and patented by LAFON
- Integral passage for a high flow
- Gravity filling or pressure
- Marketing ATEX  $\text{Ex}$  II 1G c IIB T6  
Operating temperature: from -25°C to +60°C
- ATEX : INNERIS 04ATEX0103 CE examination certificate + INNERIS 04ATEX0103/01 addition

## TECHNICAL SPECIFICATIONS

- Suitable for filling by pump or gravity
- Products : please consult the list here under
- For underground or aboveground tanks
- Maximum flow rate : up to 1.400 liters/minute
- Minimum flow rate : 60 liters/minute
- Maximum pressure : 8 bar - 110 psi
- Minimum pressure : 150 mbar - 2,17 psi
- Re-opening / flow delay : less than 1 minute
- Simple installation : Directly under the manhole cover

Références	Description
10003200	SOLO DN 80 - 3" BSP
10004015	Flange 4" alone

# SOLO CHEMICAL OPD

## List of materials constituting the Solo chemical OPD

Aluminum	Stainless steel
Cupro-Aluminum	Copper
Brass	PTFE
ARCAP	Viton for the membrane

## List of products chemically compatible with the SOLO chemical OPD (all PTFE gaskets)

Allyl alcohol	Mineral oil
Amyl alcohol	Sodium hypochlorite
Benzyl alcohol	Calcium hypochlorite
Octyl alcohol	Ammonium nitrate
Butylene	Sodium nitrate
Cyclohexane	Ammonium phosphate
Cyclopentane	Sodium phosphate
Dichloroethylene	Toluene
	Trichlorethylene
	Trimethylpentane
	Xylene

## Recommendations

The viscosity and temperature to use these products being highly variable, it is necessary to specify the conditions of use at time of installation.

The above list is not exhaustive, the use of other products and under certain conditions may be considered.



**LAFON**  
TECHNOLOGIES

CONTACT

Tél. +33 5 57 80 80 80  
mail. [contact@lafon.fr](mailto:contact@lafon.fr)  
44, avenue Lucien Victor  
Meunier  
33530 Bassens - France

Voir plus

[WWW.LAFON.FR](http://WWW.LAFON.FR)

