

PULSE 43 kW AC

Charging terminal

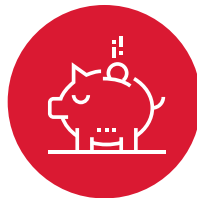


ROBUST
ECONOMIC
INTEROPERABLE



Robust

Pulse 43 AC charging station is recognised in the market for being compact and robust.



Economic

Its modular design allows it to meet regulatory requirements.



Interoperable

Pulse 43 AC is designed for charging heavy-duty vehicles. It is equally suited for use on private sites, car parks and public roads.

PULSE 43 kW AC

+ PRODUCT

- Heavy vehicle charging
- Cable up to 10 m
- Optional CB reader
- Compact
- 4G supervision connection

TECHNICAL SPECIFICATIONS

CHARGING TERMINAL

- IK10 protection rating
- Compliant with PMR standard
- Front maintenance access

USER EXPERIENCE

- Identification by badge and RFID card
- Backlit LCD screen
- Barcode reader

CABLE

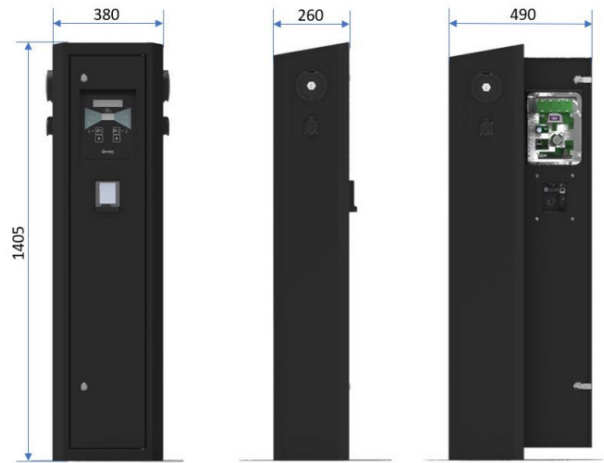
- 6m or 10m T2 63A cable

OPTIONS

- MID AC meter
- 4G router
- Cluster controller
- Cable support bracket
- Cable length up to 10 m

STANDARDS

- IEC 61851-1 Conductive charging system for electric vehicles
- IEC 62196-2 Plugs, socket outlets for electric vehicles
- EN 60439-1 Low-voltage switchgear and controlgear assemblies
- EN 60204-1 Safety of machinery - Electrical equipment of machines
- CE certification



TECHNICAL SPECIFICATIONS

Nominal current: 63 A

Nominal voltage: 400 VAC

Frequency: 50-60 Hz

Insulation voltage: 2000 V

T2 63 A cable

Operating temperature: -25°C to +50°C

Protection rating: IP55 - IK10

Communication protocols: 1.6 upgradeable to 2.0

Mounting: Floor mounting with chemical anchors (not supplied)

Sheet metal material: Aluminum body

Charging modes: 3 43 kVA AC

Communication: 4G router & Ethernet



CONTACT

Parc d'Aquitaine - 1155 avenue Jean-Baptiste Godin
33240 Saint-André-de-Cubzac - France
Tél. +33 (0)5 57 80 80 80 - Fax. 05 56 31 61 21 - Email. contact.industries@madic.com
WWW.GROUPE.MADIC.COM

ISO 9001 ISO 14001

Non-contractual document
08/2025 39000346 Ind A UK

 MADIC industries  MADIC group
a company of